



NEW PRODUCTS

Custom Shop Power Amplifiers
Power Amplifiers
Power T1 Subwoofers
Power T2 Components
Power T2 Subwoofers
Punch Amplifiers

RFDJ
Punch Plugs
Prime Amplifiers
Prime Coaxial
Prime Components
Prime Powered Loaded



Buyer's Guide

2010_{V2.5}



EXPECT MORE

NEW**PUNCH PLUGS™**
IN-EAR MONITORS

PLUG IN. PUNCH OUT.

Rockford Fosgate is not your ordinary audio manufacturer, **PUNCH PLUGS** are not your ordinary in-ear monitor. We've changed the rules when it comes to your personal space and approached the earplug in a whole new way. In the last thirty years we've learned a few things about making serious bass, in fact our **PUNCH** sonic signature has defined car audio. Rockford engineers have captured the **POWER**, the **CLARITY** and **GROUND SHAKING BASS** found in our class leading subs and found a way to put it directly in your ear.

BIGGER IS BETTER

CLASS LEADING 15mm DYNAMIC DRIVER delivers massive bass response, ultra accurate mid range and crystal clear highs.

GET LOUD

PUNCH PLUGS massive 15mm driver with a low impedance design and PUNCH EQ tuning, combine for an industry leading SPL (Sound Pressure Level). When too much is just right.

DESIGNED FOR COMFORT

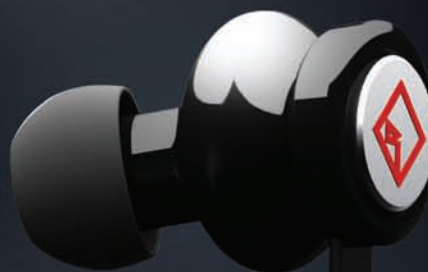
Includes multiple COMFORT PLUGS to ensure a custom fit for every ear. Superior noise attenuation keeps the PUNCH IN and the World OUT. Finally you can get loud, without fear of disturbing the peace.

PROPRIETARY TANGLE FREE FLAT CABLE DESIGN

- Low friction jacket reduces mechanical noise
- Integrated y-splitter with length adjustment
- 3.5mm low profile ergonomic connection

INTEGRATED MICROPHONE AND REMOTE (PP15MMI ONLY)

- Adjust volume by pressing the + and – buttons
- Control music and video playback
- Answer and end phone calls
- See website for compatibility to your iPod or iPhone



	Driver Size	Driver Magnet	Input Sensitivity	Frequency Response	Plug Size	Remote/Mic
PP15MM	15mm	NEODYMIUM	105dB/mW	10Hz - 18kHz	3.5mm	NO
NEW PP15MMI	15mm	NEODYMIUM	150dB/mW	10Hz - 18kHz	3.5mm	YES

*Please refer to "iPod Compatibility" chart under www.rockfordfosgate.com/products for complete listing of iPod/iPhone models.

JAM. SPIN. PARTY.

You've been mixing tracks with Rockford in your ride for years. Now you can bring that same beat to your **home**, **club** or **party** with the ALL NEW RFDJ1 2-way loudspeaker system. Huge power handling and 12" woofer combine for brutal raw output. Rugged design sets you up for the inevitable *party foul*. For the DJ in all of us, a must for the Rockford fanatic.

12" 2-WAY PASSIVE SPEAKER

- Frequency response from 33Hz-22kHz
- RMS Power 150 watts/Peak Power 300 watts
- Sensitivity 92 dB
- Nominal impedance - 4 ohms
- High efficiency, low distortion design provides high audio output with minimal power requirements

HORN LOADED COMPRESSION DRIVER

- 1" titanium diaphragm tweeter
- Better off axis response and midrange vocal clarity
- Overload protection circuitry
- Field replaceable

HIGH OUTPUT ENCLOSURE

- Bass reflex design
- Large volume for better low frequency response
- Integrated ergonomically designed handles
- Industrial grade carpet
- Interlocking corners allow stacking of multiple cabinets
- Dual input
 - 5-way binding post
 - 1/4" phono jack
- Heavy gauge steel mesh grille
- Industry standard 1 3/8" pole socket



FULLY INTERACTIVE CONTROL VIA BLUETOOTH ENABLED DEVICE

- Controlled via laptop or PDA
- Tune from the front seat of your vehicle wirelessly
- Real time adjustment (Hear the changes as you make them)

AUX INPUT WITH 31 BAND EQ

- Allows the connection of iPod/Sat radio/ MP3 player (via RCA)

IMPROVE THE SOUND OF YOUR OEM OR AFTERMARKET SOURCE UNIT

- 6 Channel 1/3 octave equalizer
- 31 Band EQ, left and right front
- 27 Band EQ, left and right rear
- 27 Band EQ, center
- 10 Band EQ, subwoofer

SAVABLE FILES

- Allows user to load files for different listening preferences
- Allows dealer to load custom files to any 3Sixty equipped vehicle

X-OVER

- 12/24 dB HP/LP/BP/AP per octave crossover
- Increased speaker power handling coupled with a broader frequency range
- Allows for superior integration between high pass and low pass speakers

MASTER VOLUME/SUBWOOFER LEVEL CONTROL

- Front seat control for song to song manipulation

BALANCED LINE DRIVER (RF-BLD)

- Eliminates system noise
- Accepts High-level/RCA level inputs
- Up to 24dB of signal gain

URNS YOUR FACTORY RADIO INTO A HIGH PERFORMANCE SOURCE UNIT

- Auto Equalization corrects prior factory equalization settings
- Auto summing creates a full range audio signal
- Retain your factory steering wheel, navigation and phone controls

3SixtyBLD

Integrate to a factory head unit or **add some juice** to a low-voltage aftermarket unit, the 3Sixty Balanced Line Driver (BLD) will get your signal across. Featuring 'Balanced Differential' or 'Single Ended' mode, its high voltage output combined with a low output impedance will drive large arrays of amplifiers without breaking a sweat.



Bluetooth™

3Sixty.2



RF-BLD

3SIXTY[®]

SEAMLESS INTEGRATION MEETS DSP PROCESSING

You just invested in the latest factory navigation unit, the last thing you want to do is have to replace it to build a killer system. Don't worry, Rockford Fosgate 3Sixty is the ultimate tool to integrate your factory head-unit and give you the control to incorporate multiple amps, sub-solutions and speakers. Looking for the most state of the art tuning device on the market? 3Sixty not only acts as the bridge from factory to performance, but also includes **SERIOUS** tuning capability. The 3Sixty computer based GUI (Graphic User Interface) is easy to use if your just getting into performance audio or are a seasoned pro.



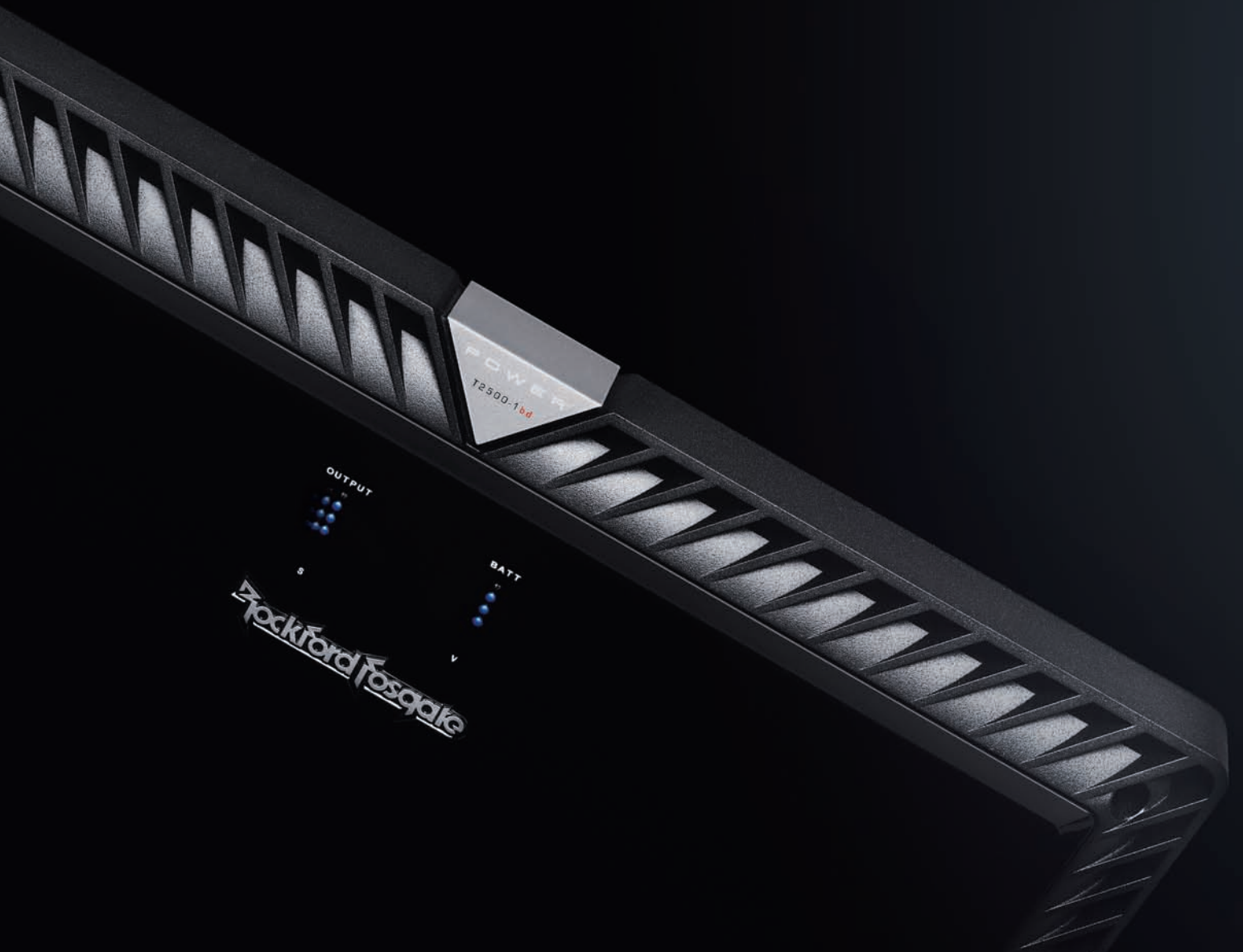
“ I’m running a massive amount of equipment in my Tahoe. Rockford’s 3Sixty processor gives me the control and tools I need to run my system. ”

Steve Meade 2006 Chevy Tahoe



AMPLIFIERS

EXPECT MORE POWER





POWER™

PUSH THE ENVELOPE.

2010 POWER amplifiers are the culmination of 30 years of pushing the envelope in amplifier technology. These amplifiers deliver unprecedented power & control in the hands of the most discriminating audio fanatic.

CONSTANT
POWER

24dB
CROSSOVER

2/1
ohms

2 YEAR LIMITED
WARRANTY

FREE!
1 YEAR
EXTENDED
WARRANTY
with purchase of a qualifying
Rockford Fosgate
Amplifier
Installation Kit



PUNCH™

THE STANDARD.

Rockford Fosgate's PUNCH has revolutionized the industry. PUNCH amps combine Rockford's heritage with the latest technology in a compact package. When you're ready to haul the mail, PUNCH amps will get the job done.

12dB
CROSSOVER

4/2
ohms

1 YEAR LIMITED
WARRANTY

FREE!
1 YEAR
EXTENDED
WARRANTY
with purchase of a qualifying
Rockford Fosgate
Amplifier
Installation Kit



PRIME

THROW DOWN.

Breaking new ground in both performance and value, PRIME amplifiers take advantage of Rockford technologies at a level that everyone can attain.

12dB
CROSSOVER

4/2
ohms

1 YEAR LIMITED
WARRANTY



REAL UNIQUE

REAL ARTISTS



REAL PAINT





T600-4 | T1500-1bdCP Candy



T600-4 | T1500-1bdCP Flame



T600-4 | T1500-1bdCP Engine Turn - Matte Black Finish



T600-4 | T1500-1bdCP Widow Maker



Custom Shop



T600-4 | T1500-1bdCP DreamScape*

STAND APART FROM THE CROWD

Rockford Fosgate's Custom Shop will be producing one-of-a kind amplifiers to set your system apart from the crowd. All custom paint schemes are available on T1500-1bdCP and T600-4 models. Due to the nature of each unit being custom, slight variation may occur. DREAMSCAPE models will be 100% artist interpretation and will vary in theme and color. Check www.rockfordfosgate.com for up to date styles. **Get yours before they're gone.**

* Artist interpretation, no two amps alike

POWERTM XL AMPLIFIERS

P.O.W.E.R. (POWER OUTPUT WITHOUT EXCESSIVE REGULATION)

- Unlike a regulated power supply design, a Rockford Fosgate power supply continues to generate more than rated power as voltage increases
- Reduced strain on the vehicles charging system during normal operation
- Increases power as impedance is lowered

DTM (DYNAMIC THERMAL MANAGEMENT) *Patent Pending*

- Dramatically increases playtime under the most demanding scenarios
- Zero loss in perceived audio output

MEHSA (MAXIMUM EFFICIENCY HEAT SINK APPLICATION)

- Increases heat transfer (5X) from output devices to the heat sink
- More watts per cubic inch

BLUE L.E.D. STEALTH VU METERS

- Displays signal and battery voltage (T2500-1bd)
- Displays dual signal strength (T1000-4)

POWER SYNC

- Two bd (Patent #6,097,249) amplifiers can be "strapped" or bridged together to form one GIANT amplifier to power a single load or speaker- Over 5500 watts from one amp!

MASTER SYNC

- Unique feature allows bd amplifiers to be linked together via a master/slave switch giving the master amplifier complete control over every other amplifier it's linked to via active preamp outputs
- Controls gain, EQ, crossover and infrasonic filters
- Competitor mode- Gain control on slave amplifiers turns into fine tuning (100x finer) for critical matching if needed to less than 0.01dB

PUNCH EQUALIZATION PATENT # 21323

- Corrects the acoustical deficiencies by delivering up to 3x the bass and/or treble
- Optional PEQ/PEQX3 (3 amplifiers from one remote) remote control available

CLASS LEADING WARRANTY

- 2 year limited warranty
- Additional 1 year w/ Engineered to Rock accessory program

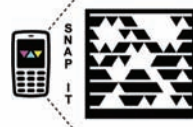


PEQ/PEQX3



WWW.ROCKFORDFOSGATE.COM

Don't forget to use our Woofer Wiring Wizard to properly wire woofers to your amplifier with easy configurable diagrams.





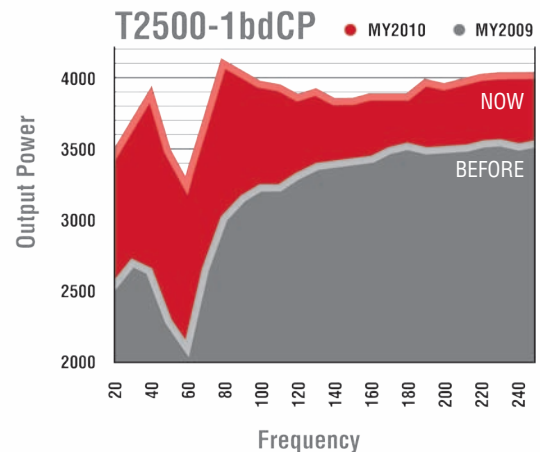
NEW

CONSTANT POWER

Our customers deserve MORE POWER.

The 2010 Power Series amplifiers with Constant Power are the most powerful amplifiers on the market **PERIOD**. Constant Power delivers up to 25% more power across all impedance levels resulting in a listening experience that's cleaner, louder and more impressive than ever before. Don't be confused with competitive products that lock-in on a particular impedance level, Rockford's proprietary technology **ACTIVELY** monitors your music and adjusts power to **MAXIMIZE** output.

- **MORE POWER** - Up to **25% INCREASE**
- **MORE OUTPUT** at all impedances
- **UNLIMITED SYSTEM FLEXIBILITY**



	Rated Power	Frequency Response	THD+N @ Rated Power	Input Sensitivity	S/N Ratio	Channel Separation	Dimensions
T1000-4	150x4 @ 4 OHMS 250x4 @ 2 OHMS 500x2 @ 4 OHMS BRIDGED	20Hz - 20kHz	<0.1%	150mV - 5V	>105dB	>50dB	H 2.14" x W 8.14" x L 21.9" (X-LARGE CHASSIS)
NEW T2500-1bdCP	1500x1 @ 4 OHMS 2500x1 @ 2 OHMS 2500x1 @ 1 OHMS	20Hz - 250Hz	<1%	150mV - 4V	>100dB	N/A	H 2.14" x W 8.14" x L 21.9" (X-LARGE CHASSIS)

NEW - CONSTANT POWER

- A circuit design actively monitors and increases voltage and current as speakers impedance rises with music
- More power delivered at 4 ohms and 2 ohms over a traditional design
- More power available over the effective frequency band as opposed to a fixed voltage/current amplifier design
- Up to 25% increase in total amplifier power
- Optimized power at either a 2 or 1 ohm configuration

P.O.W.E.R. (POWER OUTPUT WITHOUT EXCESSIVE REGULATION)

- Unlike a regulated power supply design a Rockford Fosgate power supply continues to generate more than rated power as voltage increases
- Reduced strain on the vehicle's charging system during normal operation
- Increases power as impedance is lowered

DTM (DYNAMIC THERMAL MANAGEMENT) Patent Pending

- Dramatically increases playtime under the most demanding scenarios
- Zero loss in perceived audio output

MEHSA (MAXIMUM EFFICIENCY HEAT SINK APPLICATION)

- Increases heat transfer from output devices to the heat sink
- Transfers heat 5x better than traditional amplifiers
- More watts per cubic inch
- Improved component reliability

PUNCH EQUALIZATION PATENT # 21323

- Corrects the acoustical deficiencies in the listening environment, by delivering up to 3x the bass and/or treble
- Optional PEQ/PEQX3 (3 amplifiers from one remote) remote control available

24 dB/OCTAVE CONTINUOUSLY VARIABLE CROSSOVER

- Increased speaker power handling coupled with a broader frequency crossover range
- Allows for superior integration between high pass and low pass speakers

LOW IMPEDANCE STABILITY

- 2 ohm mono / 1 ohm stereo stable on full range amplifiers
- 1 ohm mono stable on bd (Patent #6,097,249) amplifiers

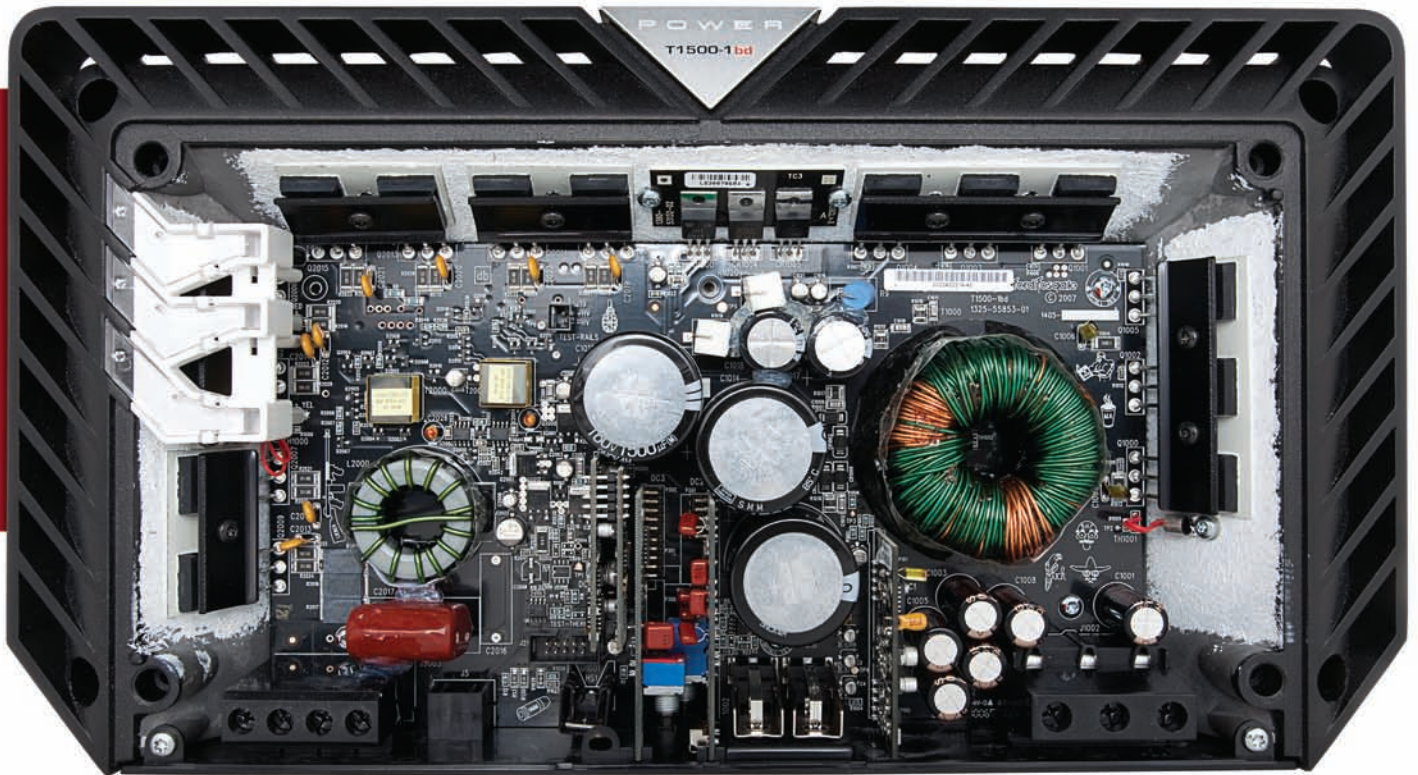
CLASS LEADING WARRANTY

- 2 year limited warranty
- Additional 1 year w/ Engineered to Rock accessory program

Calling These Amplifiers Top-Of-The Line Doesn't do Them Justice.

Power Series amplifiers are the best your money can buy. The heart of ANY system, how your amplifier performs is directly related to how loud, long and clear your system will play. Rockford Fosgate Power Series two & four channel amplifiers give flexibility to your system design and the look to stop traffic. Our new mono amps, with Constant Power, are the most powerful amps we've ever developed. Are you ready to take your system to the highest level and beyond?





CONSTANT
POWER

	Rated Power	Frequency Response	THD+N @ Rated Power	Input Sensitivity	S/N Ratio	Channel Separation	Dimensions
T400-2	120x2 @ 4 OHMS 200x2 @ 2 OHMS 400x1 @ 4 OHMS BRIDGED	20Hz - 20kHz	<0.05%	150mV - 5V	>105dB	>50dB	H 2.14" x W 8.14" x L 11.41" (SMALL CHASSIS)
T600-2	200x2 @ 4 OHMS 300x2 @ 2 OHMS 600x1 @ 4 OHMS BRIDGED	20Hz - 20kHz	<0.05%	150mV - 5V	>105dB	>50dB	H 2.14" x W 8.14" x L 13.66" (MEDIUM CHASSIS)
T400-4	60x4 @ 4 OHMS 100x4 @ 2 OHMS 200x2 @ 4 OHMS BRIDGED	20Hz - 20kHz	<0.05%	150mV - 5V	>105dB	>50dB	H 2.14" x W 8.14" x L 13.66" (MEDIUM CHASSIS)
T600-4	100x4 @ 4 OHMS 150x4 @ 2 OHMS 300x2 @ 4 OHMS BRIDGED	20Hz - 20kHz	<0.05%	150mV - 5V	>105dB	>50dB	H 2.14" x W 8.14" x L 14.91" (LARGE CHASSIS)
NEW T500-1bdCP	300x1 @ 4 OHMS 500x1 @ 2 OHMS 500x1 @ 1 OHMS	20Hz - 250Hz	<0.05%	150mV - 5V	>100dB	N/A	H 2.14" x W 8.14" x L 11.41" (SMALL CHASSIS)
NEW T1000-1bdCP	700x1 @ 4 OHMS 1000x1 @ 2 OHMS 1000x1 @ 1 OHMS	20Hz - 250Hz	<0.7%	150mV - 5V	>100dB	N/A	H 2.14" x W 8.14" x L 13.66" (MEDIUM CHASSIS)
NEW T1500-1bdCP	1000x1 @ 4 OHMS 1500x1 @ 2 OHMS 1500x1 @ 1 OHMS	20Hz - 250Hz	<0.8%	150mV - 5V	>100dB	N/A	H 2.14" x W 8.14" x L 14.91" (LARGE CHASSIS)

The Industry Standard.

Rockford Fosgate PUNCH EQ has revolutionized the industry and PUNCH amplifiers are the benchmark. 2010 brings several new PUNCH amplifiers in four different chassis designs offering even more choices to how you design your performance audio system. The right amp for the right application, PUNCH amplifiers with RF exclusive technologies like P.O.W.E.R., DTM and MEHSA are sure to impress your friends and haul the mail.

P.O.W.E.R. (POWER OUTPUT WITHOUT EXCESSIVE REGULATION)

- Unlike a regulated power supply design, a Rockford Fosgate power supply continues to generate more than rated power as voltage increases
- Reduced strain on the vehicle's charging system during normal operation
- Increases power as impedance is lowered

DTM (DYNAMIC THERMAL MANAGEMENT) *Patent Pending*

- Dramatically increases playtime under the most demanding scenarios
- Zero loss in perceived audio output

MEHSA (MAXIMUM EFFICIENCY HEAT SINK APPLICATION)

- Increases heat transfer from output devices to the heat sink
- Transfers heat 5x better than traditional amplifiers
- More watts per cubic inch
- Improved component reliability

PUNCH EQUALIZATION

- Corrects the acoustical deficiencies in the listening environment, by delivering up to 3x the bass and/or treble
- Optional PEQ/PEQX3 (3 amplifiers from one remote) remote control available
- Patented design

12 DB/OCTAVE CONTINUOUSLY VARIABLE CROSSOVER

- Increased speaker power handling coupled with a broader frequency crossover range

LOW IMPEDANCE STABILITY

- 2 ohm mono stable (P300-1)
- 1 ohm mono stable on bd (Patent #6,097,249) amplifiers

CLASS LEADING WARRANTY

- 1 year limited warranty
- Additional 1 year w/ Engineered to Rock accessory program



PEQ/PEQX3

P200-2 | P300-2 | P300-1 | P400-1



P400-2 | P500-1bd | P700-1bd



P500-2 | P400-4 | P500-4





P1000-1bd



		Rated Power	Frequency Response	THD+N @ Rated Power	Input Sensitivity	S/N Ratio	Channel Separation	Dimensions
	P200-2	50x2 @ 4 OHMS 100x2 @ 2 OHMS 200x1 @ 4 OHMS BRIDGED	20Hz - 20kHz	<0.05%	150mV - 4v	>105dB	>50dB	H 2.2" x W 7.7" x L 9" (MINI CHASSIS)
	P300-2	75x2 @ 4 OHMS 150x2 @ 2 OHMS 300x1 @ 4 OHMS BRIDGED	20Hz - 20kHz	<0.05%	150mV - 4v	>105dB	>50dB	H 2.2" x W 7.7" x L 9" (MINI CHASSIS)
	P400-2	100x2 @ 4 OHMS 200x2 @ 2 OHMS 400x1 @ 4 OHMS BRIDGED	20Hz - 20kHz	<0.05%	150mV - 4v	>105dB	>50dB	H 2.2" x W 7.7" x L 10.3" (SMALL CHASSIS)
	P500-2	125x2 @ 4 OHMS 250x2 @ 2 OHMS 500x1 @ 4 OHMS BRIDGED	20Hz - 20kHz	<0.05%	150mV - 4v	>105dB	>50dB	H 2.2" x W 7.7" x L 13" (MEDIUM CHASSIS)
	P400-4	50x4 @ 4 OHMS 100x4 @ 2 OHMS 200x2 @ 4 OHMS BRIDGED	20Hz - 20kHz	<0.05%	150mV - 4v	>105dB	>50dB	H 2.2" x W 7.7" x L 13" (MEDIUM CHASSIS)
NEW	P500-4	60x4 @ 4 OHMS 125x4 @ 2 OHMS 250x2 @ 4 OHMS BRIDGED	20Hz - 20kHz	<0.05%	150mV - 4v	>105dB	>50dB	H 2.2" x W 7.7" x L 13" (MEDIUM CHASSIS)
	P300-1	150x1 @ 4 OHMS 300x1 @ 2 OHMS	20Hz - 20kHz	<0.1%	150mV - 4v	>100dB	N/A	H 2.2" x W 7.7" x L 9" (MINI CHASSIS)
NEW	P400-1	200x1 @ 4 OHMS 400x1 @ 2 OHMS	20Hz - 20kHz	<0.1%	150mV - 4v	>100dB	N/A	H 2.2" x W 7.7" x L 9" (MINI CHASSIS)
	P500-1bd	200x1 @ 4 OHMS 400x1 @ 2 OHMS 500x1 @ 1 OHMS	20Hz - 250Hz	<0.8%	150mV - 4v	>100dB	N/A	H 2.2" x W 7.7" x L 10.3" (SMALL CHASSIS)
NEW	P700-1bd	225x1 @ 4 OHMS 450x1 @ 2 OHMS 700x1 @ 1 OHMS	20Hz - 250Hz	<0.8%	150mV - 4v	>100dB	N/A	H 2.2" x W 7.7" x L 10.3" (SMALL CHASSIS)
	P1000-1bd	250x1 @ 4 OHMS 500x1 @ 2 OHMS 1000x1 @ 1 OHMS	20Hz - 250Hz	<0.8%	150mV - 4v	>100dB	N/A	H 2.2" x W 7.7" x L 14.4" (LARGE CHASSIS)

PRIME AMPLIFIERS

P.O.W.E.R. (POWER OUTPUT WITHOUT EXCESSIVE REGULATION)

- Unlike a regulated power supply design a Rockford Fosgate power supply continues to generate more than rated power as voltage increases.
- Reduced strain on the vehicles charging system during normal operation.
- Ultra efficient Class D
- Increases power as impedance is lowered.

PRIME-LOC

- Allows an infinite number of amplifiers to be locked together to form a custom look
- Reduces amplifiers installation footprint
- Improves thermal capacity

PUNCH BASS

- Corrects the acoustical deficiencies in the listening environment, by delivering up to 3x the bass.
- On-Board control is a 45 Hz EQ
- Punch remote level control (PLC) included to increase or decrease overall output

*R250-1/R500-1/R1000-1D only

12 DB/OCTAVE CROSSOVER

- Increased speaker power handling coupled with a broader frequency crossover range

LOW IMPEDANCE STABILITY

- 4 ohm mono stable full range amplifiers
- 2 ohm mono stable on mono amplifiers

CLASS LEADING WARRANTY

- 1 year limited warranty

R150-2 | R250-1 | R1000-1d



Remote Level Control

Prime-Loc

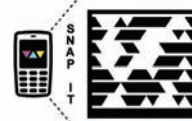


ROCKFORD FOSGATE

WWW.ROCKFORDFOSGATE.COM



Don't forget to use our Amp Wire calculator to optimize your amplifier's power output with properly sized (AWG) wires.



Throw down big, without throwing down big.

Breaking new ground in both performance and value, PRIME amplifiers take advantage of Rockford technologies at a level that everyone can attain. Built with the same P.O.W.E.R. technology as Punch and Power series amplifiers and available in five different models in two compact chassis sizes you're "PRIMED" to build your system with all the right features.

R300-4 | R500-1



	Rated Power	Frequency Response	THD+N @ Rated Power	Input Sensitivity	S/N Ratio	Channel Separation	Dimensions
R150-2	50x2 @ 4 OHMS 75x2 @ 2 OHMS 150x1 @ 4 OHMS BRIDGED	20Hz - 20kHz	<0.1%	150mV - 8V	>90dB	>50dB	H 2.4" x W 7.7" x L 11.54" (SMALL CHASSIS)
R300-4	50x4 @ 4 OHMS 75x4 @ 2 OHMS 150x2 @ 4 OHMS BRIDGED	20Hz - 20kHz	<1.0%	150mV - 8V	>90dB	>50dB	H 2.4" x W 7.7" x L 16.65" (LARGE CHASSIS)
NEW R250-1	150x1 @ 4 OHMS 250x1 @ 2 OHMS	20Hz - 250Hz	<1.0%	150mV - 8V	>100dB	N/A	H 2.4" x W 7.7" x L 11.54" (SMALL CHASSIS)
R500-1	320x1 @ 4 OHMS 500x1 @ 2 OHMS	20Hz - 250Hz	<1.0%	150mV - 8V	>100dB	N/A	H 2.4" x W 7.7" x L 16.65" (LARGE CHASSIS)
NEW R1000-1d	500x1 @ 4 OHMS 1000x1 @ 2 OHMS	20Hz - 250Hz	<1.0%	150mV - 8V	>100dB	N/A	H 2.4" x W 7.7" x L 11.54" (SMALL CHASSIS)

SUBWOOFERS

EXPECT MORE BASS





POWER™

PUSH THE ENVELOPE.

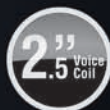
We've raised the bar, again. If you're looking to rattle windows and set car alarms off in the next town over, POWER subwoofers thump bass PERIOD.



PUNCH™

THE STANDARD.

With 26 different models PUNCH subs offer huge bass and the right installation for any system. Don't just reach your system's potential. PUNCH it.



PRIME

THROW DOWN.

Subs that are ready to ROCK and throw down the lows without emptying your wallet, PRIME woofers are the perfect first step into performance audio.



T2 12" | 15"

① PARABOLIC TRIANGULAR CONE GEOMETRY SUPPORT SYSTEM

- Bonds Aluminum parabolic dust cap to the aluminum cone body
- Reduces piston flex
- Eliminates cone distortion

② PRECISION CAST ALUMINUM ALLOY BASKET

- Dual die-cast aluminum baskets with spider venting adds rigidity and eliminates multiple acoustic resonances
- Large aluminum mass helps reduce voice coil former temperature and increase power handling

③ HIGH EXCURSION THERMO-RUBBER SURROUND

- Tall/Profile surround allows for linear travel characteristics on high excursion drivers without reducing piston size

④ MIRROR IMAGE SYMMETRICAL SPIDERS WITH EMBEDDED 12 AWG TINSEL LEADS

- Dual-opposing spiders improve mechanical stability under high excursion
- Embedded tinsel leads shorten the length resulting in lower resistance
- Higher power handling

⑤ ANODIZED ALUMINUM VOICE COIL FORMER WITH FLAT EDGE WOUND COPPER CLAD ALUMINUM WIRE

- Superior heat dissipation
- Up to 100 degrees cooler at full power levels
- Edge wound wire increases motor strength and reduces overall weight

⑥ REMOVABLE AND REVERSIBLE SCREW CONCEALING RING

- Cosmetically matching aluminum ring
- Unique design allows woofer to be mounted either in an inset position or inverted position to create a finished look

⑦ IDHS™ EMBEDDED COPPER HEAT SINK SHORTING RING

- Reduces back EMF (electro-magnetic force)
- Reduces distortion
- Reduces voice coil temperature
- Improves system efficiency

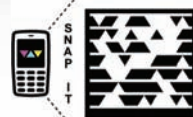


RF TECH

WWW.ROCKFORDFOSGATE.COM



Don't forget to use our Woofer BoxAdvisor because it contains recommended enclosures that optimize bass performance.



Built Like a TANK. Competition Grade.

Power T2 subwoofers have been upgraded for 2010 with a new **bad-ass** look, revised cone, new spider design and better cooling that will make your competition shake in their boots. Available in both 12" & 15" sizes, the T2 is perfectly matched to Rockford's Power Series amplifiers. Built like a tank, on a precision cast aluminum alloy basket, choose T2 and roll over the competition.



	Speaker Size	RMS Power Handling	Peak Power Handling	Nominal Impedance	Sealed Enclosure	Ported Enclosure	Sensitivity	Mounting Depth
NEW T2D212/T2D412	12"	1200 WATTS	2400 WATTS	DUAL 2 Ω OR 4 Ω	1.00 CU. FT.	2.00 CU. FT. PORT: (1) 4"x12"	83.5dB	9.00"
NEW T2D215/T2D415	15"	1200 WATTS	2400 WATTS	DUAL 2 Ω OR 4 Ω	2.00 CU. FT.	2.75 CU. FT. PORT: (1) 6"x17"	86dB	10.00"



① VAST™ (VERTICAL ATTACH SURROUND™ TECHNIQUE) SURROUND

- Significantly increases a speaker's effective radiating cone area (up to 25%) without complicated installation issues
- Improved nominal efficiency
- Maximized output capabilities
- Patent Pending

② FLEX FIT

- Slot mounted pattern allows for variable adjustments

③ PARABOLIC TRIANGULAR CONE GEOMETRY SUPPORT SYSTEM

- Bonds Aluminum parabolic dust cap to the Kevlar fiber reinforced paper cone body
- Reduces piston flex
- Eliminates cone distortion

④ IHS™ EMBEDDED COPPER HEAT SINK SHORTING RING

- Reduces back EMF (electro-magnetic force)
- Reduces distortion
- Reduces voice coil temperature
- Improves system efficiency

⑤ PROPRIETARY SWIFT™ (SELECTABLE WOOFER IMPEDANCE FUSED TERMINAL) CONNECTION

- Impedance selectable (1 or 4, 2 or 8)
- Field replaceable fusing
- Convenient wire access
- Oversized 8 AWG inputs

⑥ PRECISION DIE-CAST ALUMINUM ALLOY BASKET

- Die-cast aluminum baskets with spider venting adds rigidity and eliminates multiple acoustic resonances
- Large aluminum mass helps reduce voice coil former temperature and increase power handling

⑦ HIGH EXCURSION TPE (THERMO-PLASTIC ELASTOMER) SURROUND

- Tall/Profile surround allows for linear travel characteristics on high excursion drivers without reducing piston size

⑧ SYMMETRICAL DUAL PROGRESSIVE ROLL TEAR RESISTANT POLY-COTTON SPIDERS

- Dual-opposing spiders improve mechanical stability under high excursion
- Multipoint "periodic" stitched lead wire reduces mass, stress and strain
- Higher power handling

⑨ ANODIZED ALUMINUM VOICE COIL FORMER WITH COPPER CLAD ALUMINUM WIRE

- Spun-laced Nomex collar improves voice coil bonding
- Superior heat dissipation
- Up to 100 degrees cooler at full power levels
- Hard anodized finish increases former strength

⑩ REMOVABLE AND REVERSIBLE SCREW CONCEALING RING / GRILLE

- Cosmetically matching aluminum ring
- Unique design allows woofer to be mounted either in an inset position or inverted position to create a finished look
- Removable grille



We've Raised the Bar, Again.

ALL NEW from the ground up, 2010 Power Series T1 subwoofers build on Rockford Fosgate technologies first seen in our all new full range line. These bad boys have patented VAST technology that increases surface cone area up to **25%** so the T1 performs like a much larger woofer. Flex Fit not only looks the part but gives extreme flexibility for extreme installations. Clean, high tech and ready to set off car alarms, the new T1 is here.



	Speaker Size	RMS Power Handling	Peak Power Handling	Nominal Impedance	Sealed Enclosure	Ported Enclosure	Sensitivity	Mounting Depth
NEW T1D210/T1D410	10"	600 WATTS	1200 WATTS	DUAL 2 Ω OR 4 Ω	0.75 CU. FT.	1.50 CU. FT. PORT: (1) 4"x11"	83dB	6.375"
NEW T1D212/T1D412	12"	800 WATTS	1600 WATTS	DUAL 2 Ω OR 4 Ω	1.25 CU. FT.	1.75 CU. FT. PORT: (1) 4"x9"	86dB	6.75"

P3 | P3S

PARABOLIC TRIANGULAR CONE GEOMETRY SUPPORT SYSTEM

- Bonds parabolic dust cap to the Kevlar fiber reinforced cone body
- Reduces piston flex and eliminates cone distortion

DIE-CAST ALUMINUM BASKET

- Dual die-cast aluminum basket with spider venting adds rigidity and eliminates multiple acoustic resonances
- Large aluminum mass helps reduce voice coil former temperature and increase power handling
- Ultra-shallow die-cast aluminum basket with 3.5" mounting depth (P3S)

VENTURI-EFFECT CENTER POLE COOLING

- Gradually reduces the air-flow exhaust path area, which increases the air speed across key thermal masses of the speaker's motor parts
- Maximizes cooling effectiveness

HIGH EXCURSION POLY-ETHERESTER SURROUND

- Tall profile surround allows for linear travel characteristics on high excursion drivers without reducing piston size

DUAL LINEAR SPIDERS WITH MULTIPOINT STITCHED 16 AWG TINSEL LEADS

- Dual-opposing spiders improve mechanical stability under high excursion
- Multipoint "periodic" stitched lead wire reduces mass, stress and strain over a greater area
- Higher power handling and improved reliability
- Progressive spiders with multipoint stitched tinsel leads (P3S)

ANODIZED ALUMINUM VOICE COIL FORMER WITH SPUN LACED NOMEX COLLAR

- Superior heat dissipation
- Provides ideal bonding and strength at critical neck joint junction
- Hard anodized treatment increases former strength

REMOVABLE AND REVERSIBLE SCREW CONCEALING TRIM RING

- Cosmetically matching cast aluminum trim ring
- Unique design allows woofer to be mounted either in an inset position or inverted position to create a finished look
- Optional grille available



ROCKFORD FOSGATE

WWW.ROCKFORDFOSGATE.COM



Don't forget to use our Woofer BoxWizard to calculate available air space inside your woofer enclosure.



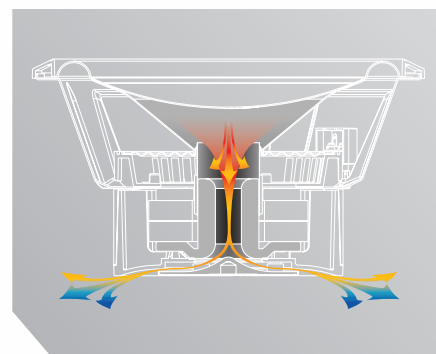
The STANDARD.

With 26 different models, PUNCH subwoofers deliver huge bass and the right installation for any system. Match with a PUNCH amp and these woofers will rip your face off. Is it the clean look? Is it the rock solid durability? Is it the class leading power handling? YES.

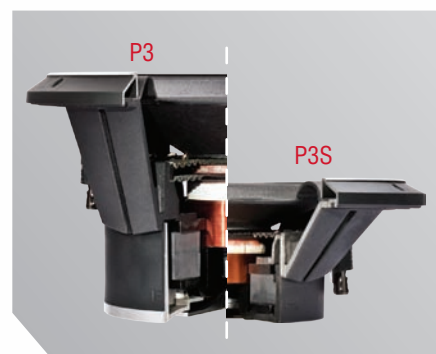


Shallow Depth

GREAT For
Shallow
Applications



Venturi-Effect Cooling (P3)



Size Comparison



Mirror Imaged Spider (P3)



	Speaker Size	RMS Power Handling	Peak Power Handling	Nominal Impedance	Sealed Enclosure	Ported Enclosure	Sensitivity	Mounting Depth
P3D210/P3D410	10"	400 WATTS	800 WATTS	DUAL 2 Ω OR 4 Ω	0.60 CU. FT.	1.40 CU. FT. PORT: (1) 4"x14"	83dB	6.25"
P3D212/P3D412	12"	500 WATTS	1000 WATTS	DUAL 2 Ω OR 4 Ω	1.00 CU. FT.	1.79 CU. FT. PORT: (1) 4"x10"	85dB	6.75"
P3D215/P3D415	15"	500 WATTS	1000 WATTS	DUAL 2 Ω OR 4 Ω	1.60 CU. FT.	2.66 CU. FT. PORT: (1) 4"x10"	86dB	7.625"
P3SD210/P3SD410	10"	300 WATTS	600 WATTS	DUAL 2 Ω OR 4 Ω	0.50 CU. FT.	0.75 CU. FT. PORT: (1) 3"x12"	83dB	3.5"
P3SD212/P3SD412	12"	400 WATTS	800 WATTS	DUAL 2 Ω OR 4 Ω	1.00 CU. FT.	1.25 CU. FT. PORT: (1) 4"x12"	86dB	3.625"

P2 | P1

PARABOLIC TRIANGULAR CONE GEOMETRY SUPPORT SYSTEM

- Bonds parabolic dust cap to the cone body
- Reduces piston flex
- Eliminates cone distortion

VENTURI-EFFECT CENTER POLE COOLING (P2)

- Gradually reduces the air-flow exhaust path area, which increases the air speed across key thermal masses of the speaker's motor parts
- Maximizes cooling effectiveness

HIGH DENSITY POLY-FOAM SURROUND

- Proper stiffness and thickness provides optimum performance

LINEAR SPIDER WITH MULTIPOINT STITCHED 16 AWG TINSEL LEADS

- Multipoint "periodic" stitched lead wire reduces mass, stress and strain over a greater area
- Higher power handling
- Improved reliability

ANODIZED ALUMINUM VOICE COIL FORMER WITH SPUN LACED NOMEX COLLAR

- Superior heat dissipation
- Provides ideal bonding and strength at critical neck joint junction
- Hard anodized finish increases former strength

REMOVABLE AND REVERSIBLE SCREW CONCEALING TRIM RING

- Cosmetically matching trim ring
- Unique design allows woofer to be mounted either in an inset position or inverted position to create a finished look
- Optional grille available



Authentic Rockford Performance

PUNCH P1 & P2 subwoofers are the real deal. A favorite of bass enthusiasts worldwide, PUNCH P1/P2 woofers set the bar and set it high. So, ditch your factory 8" and build your first real box with a PUNCH P1/P2 15". Now you can stop talking about how much bass you've got, and bring it.



P1 8" | 10" | 12" | 15"

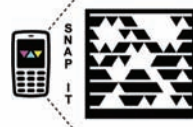


RFTECH

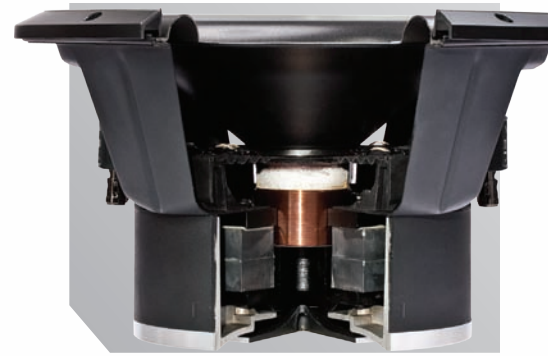
WWW.ROCKFORDFOSGATE.COM



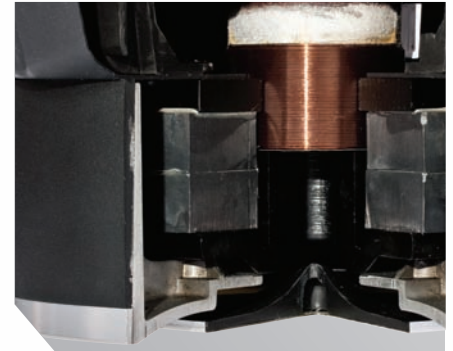
Don't forget to use our Woofer Wiring Wizard to properly wire woofers to your amplifier with easy configurable diagrams.



P2 8" | 10" | 12" | 15"



Venturi-Effect Cooling (P2)



Double Stacked Motor (P2)



Stitched Leads



	Speaker Size	RMS Power Handling	Peak Power Handling	Nominal Impedance	Sealed Enclosure	Ported Enclosure	Sensitivity	Mounting Depth
P2D28/P2D48	8"	200 WATTS	400 WATTS	DUAL 2 Ω OR 4 Ω	0.23 CU. FT.	0.65 CU. FT. PORT: (1) 2"x8"	84dB	4.625"
P2D210/P2D410	10"	250 WATTS	500 WATTS	DUAL 2 Ω OR 4 Ω	0.59 CU. FT.	1.40 CU. FT. PORT: (1) 4"x14"	84dB	5.75"
P2D212/P2D412	12"	250 WATTS	500 WATTS	DUAL 2 Ω OR 4 Ω	1.02 CU. FT.	1.79 CU. FT. PORT: (1) 4"x10"	86dB	6.375"
P2D215/P2D415	15"	250 WATTS	500 WATTS	DUAL 2 Ω OR 4 Ω	1.58 CU. FT.	2.66 CU. FT. PORT: (1) 4"x10"	86dB	7.125"
P1S48/P1S88	8"	150 WATTS	300 WATTS	SINGLE 4 Ω OR 8 Ω	0.23 CU. FT.	0.65 CU. FT. PORT: (1) 2"x6"	84dB	4.125"
P1S410/P1S810	10"	150 WATTS	300 WATTS	SINGLE 4 Ω OR 8 Ω	0.59 CU. FT.	1.40 CU. FT. PORT: (1) 3"x8"	85dB	5.125"
P1S412/P1S812	12"	150 WATTS	300 WATTS	SINGLE 4 Ω OR 8 Ω	1.02 CU. FT.	1.79 CU. FT. PORT: (1) 3"x6"	86dB	5.875"
P1S415/P1S815	15"	200 WATTS	400 WATTS	SINGLE 4 Ω OR 8 Ω	1.58 CU. FT.	2.66 CU. FT. PORT: (1) 4"x8"	87dB	6.875"

When You Want **BASS** and You Want it Done **RIGHT**

Rockford Fosgate PUNCH LOADED enclosures are designed for one purpose, deliver maximum performance tuned EXACTLY for our PUNCH subwoofers. A no-compromise design, Rockford engineers use LEAP (Loudspeaker Enclosure Analysis Program) to match the enclosure to the specific PUNCH woofer. Only a factory tuned enclosure guarantees your system will bump big & look tight.

HIGH-FLOW, LOW-NOISE SLOT PORT

- LEAP (Loudspeaker Enclosure Analysis Program) is utilized to determine the optimum port tuning for each subwoofer/enclosure model
- Maximizes acoustical output
- Minimizes noise and distortion

PRECISION CONSTRUCTED WITH 5/8" MDF (MEDIUM DENSITY FIBERBOARD)

- Superior rigidity
- Dampens unwanted acoustical resonances
- Computer controlled machinery ensures precise dimensional accuracy

LARGE AWG INPUT TERMINALS

- Accepts standard banana plug
- Easy connection for large 10 AWG speaker wire
- Standardized 4 ohm nominal impedance across all models

INDUSTRIAL GRADE CARPET

- Designed for the automotive environment using hi-temp adhesives
- High density and wear resistant

AVAILABLE FOR ALL PUNCH WOOFERS

- Single or dual applications



P3L-1X12



Slim Design
GREAT For
Truck Installations

P3L-S12

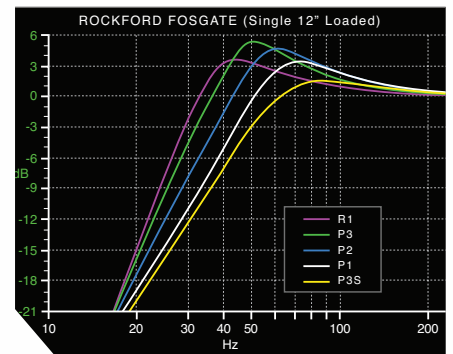


Shallow Loaded



Punch Loaded

P3L-2X12



Loaded Performance



Grille (optional)

PUNCH™

>>> OVERLOAD <<<

POWERED SUBWOOFER ENCLOSURE

WHAT A POWERED SUBWOOFER SHOULD BE

- Real woofer
- Real amp
- Real enclosure

PROPRIETARY 12" SUBWOOFER

- "Closed-loop" design ensures optimum performance between subwoofer, amplifier and enclosure

INTEGRATED PUNCH AMPLIFIER

- 300 watt P.O.W.E.R. (Power Output Without Excessive Regulation) amplifier
- Removable power/ground connector
- RCA and speaker level inputs with auto turn-on circuit
- On board EQ restoration

COMPACT ABS ENCLOSURE

- Optimized slot ported enclosure
- Woofer "loading plate" adds acoustical output and protects woofer from damage
- Multiple mounting configurations - vertical and horizontal

OPTIONAL REMOTE LEVEL CONTROL

- Existing Rockford (PEQ) remote transforms from an EQ boost to a remote level control

Overload Delivers Deep Tight Bass in a Sleek All-In-One Solution.

This isn't some low power "cone in a tube," the Rockford Fosgate Overload comes to the party with a true 300 watts (max) of power and a 12" woofer enough to overload even the most bass hungry enthusiast. Quick disconnects give you the option for rapid removal for let's say a set of golf clubs, or leave it in and tee-up some doom.



Closed Loop System



Compact ABS enclosure

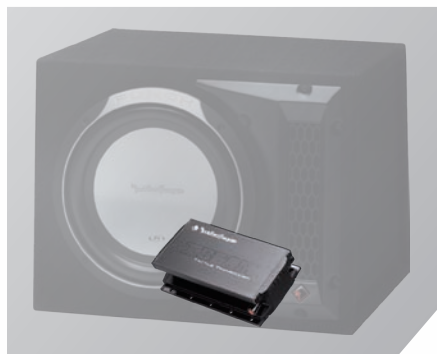


Short on Space But Want Killer Bass?

The ultra compact Rockford Fosgate IBeam, IB-200, is your secret agent in the pursuit of the ultimate bass experience. Declassified as a tactile transducer, the I-beam is designed to stimulate your sense of touch with a heart pounding power handling of 250 watts RMS. We like our IBeam's mounted directly to the seat frame here at Rockford. When spooled up on your frame, IBeam's energy transfer will turn any system into a system that's licensed to kill.



Under-Seat Mount



Compact Size



THE ULTIMATE VEHICLE SPECIFIC BASS SOLUTION

- No enclosure needed... just plug and play
- Measures only H 2" x W 4.25" x L 6.875"
- Mounts in any position and can be completely hidden/covered
- Can be used with or without a traditional subwoofer
- (Patent #7,402,922)

HOW DOES IT WORK?

- Accurately and efficiently energizes the listener's auditory cortex without pressurizing surrounding air
- Transmits information via bone harmonics, skin galvanic (electrical properties of skin) and other direct stimulus routes

LOCALIZED BASS

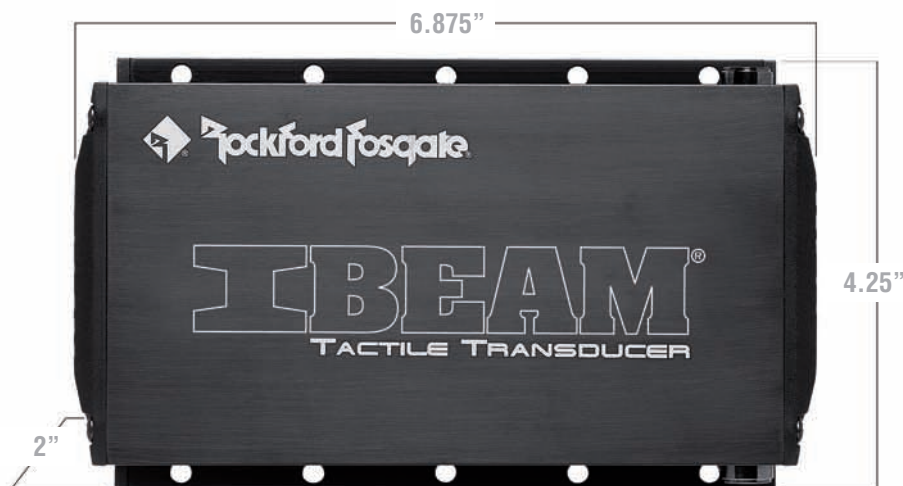
- When attached to a resonant surface, it will be 'felt' by only the listener in comparison to the sound produced by subwoofers and ordinary speakers
- An optimum sound quality level is often reached when you can just feel rather than hear the bass
- Reduced "noise pollution"

MULTIPLE INSTALLATION OPPORTUNITIES

- Home theater
- Gaming
- Simulators
- Amusement parks
- Studios
- Hearing impaired
- Rear seat entertainment
- Bass augmentation to existing automotive and home systems

"BUTT SHAKERS" VS IBEAM

- Butt shakers provide a narrow band of low frequency vibration which the brain translates as "shaking", whereas the IBEAM delivers a broad band of deep bass output that the human brain can recognize



PRIME

SUBWOOFERS

COMPRESSION STYLE SPEAKER CONNECTION

- Accepts up to 10 AWG wire
- Nickel plated

PARABOLIC MICA INJECTED POLYPROPYLENE CONE

- Adds strength and rigidity
- Provides resiliency against high power output
- Full bodied sound

STAMPED STEEL FRAME

- Textured abrasion resistant powder coated finish
- Shallow mounting depth
- Integrated mounting ring

Expect More, Spend Less

Rockford Fosgate PRIME subwoofers are the perfect first step into performance audio. Purebred Rockford DNA, these woofers offer a value the competition just can't match. When you combine the 2" voice coils and 150 watt power handling with a Prime amplifier, this system will always get it done. You've always wanted a Rockford system, now you can.



	Speaker Size	RMS Power Handling	Peak Power Handling	Nominal Impedance	Sealed Enclosure	Ported Enclosure	Sensitivity	Mounting Depth
R1S410	10"	150 WATTS	300 WATTS	SINGLE 4 Ω	0.75 CU. FT.	N/A	86dB	4.57"
R1S412	12"	150 WATTS	300 WATTS	SINGLE 4 Ω	1.02 CU. FT.	N/A	87dB	5.00"

Hard Hitting, ALL-IN-ONE Bass Solution

The All-New PRIME POWERED LOADED bass solution mixes it up with leading edge Rockford Fosgate technology in a small affordable package. Armed with a 300 watt class D amplifier and either 10" or 12" PRIME subwoofer, the PRIME POWERED LOADED is a perfect add to your trunk, cargo area or behind your rear seat.



R300-12



PROPRIETARY 10" OR 12" SUBWOOFER IN PRIME POWERED LOADED

- "Closed-Loop" design ensures optimum performance between subwoofer, amplifier and enclosure
- 300 watt RMS class D amplifier
- Robust Power/Ground connector
- RCA and speaker level inputs
- On board EQ restoration
- Includes remote level control
- Hi-efficiency amplifier design, low current - perfect for hybrids

PRECISION CONSTRUCTED WITH 5/8" MDF (MEDIUM DENSITY FIBERBOARD)

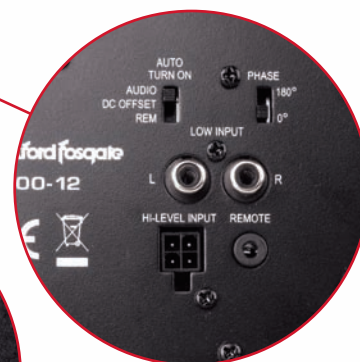
- Superior rigidity
- Dampens unwanted acoustical resonances
- Computer controlled machinery ensures precise dimensional accuracy

LARGE AWG INPUT TERMINALS

- Accepts standard banana plug
- Easy connection for large 10 AWG speaker wire

INDUSTRIAL GRADE CARPET

- Designed for the automotive environment using hi-temp adhesives
- High density, wear resistant



LOUDSPEAKERS

EXPECT MORE CLARITY





P O W E R™

PUSH THE ENVELOPE.

Once you hear them you'll know. Power loudspeakers will transform your ride into a sonic experience so accurate and clear you might not want to get out of your car.



P U N C H™

THE STANDARD.

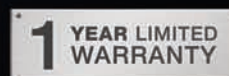
Don't just listen to your music, feel it. Packed with features, just like its older brother POWER, PUNCH loudspeakers are for those who like it raw and loud.



P R I M E

THROW DOWN.

With newly added components (R162-S & R152-S) PRIME loudspeakers are a perfect factory replacement for any vehicle. Rockford DNA throughout, PRIME loudspeakers get it done.



COMPONENTS | COAXIALS

VAST (VERTICAL ATTACH SURROUND TECHNIQUE) BUTYL RUBBER SURROUND

- Significantly increases a speaker's effective radiating cone area (up to 25%) without complicated installation issues
- Improved nominal efficiency
- Maximized output capabilities
- Patent Pending

FLEX FIT

- Slot mounted pattern allows for flexible installation

MULTI-OEM

- OEM adaptor plate designed to allow single skus for multiple vehicle applications
- Allows round component or coax to fit in certain 4x6"/5x7"/6x9" openings

ICC (INTEGRATED CONCEALED CROSSOVER) COAXIAL

- Reduces installation time
- Cleaner and easier installation

EXTERNAL AUDIOPHILE GRADE COMPONENT CROSSOVER

- 5% tolerance high quality poly-capacitors and Air-core inductors
- PTC (positive temperature coefficient) protection device with bypass resistor for 100% playtime
- 3 level tweeter attenuation
- On axis/off axis tweeter configuration

ALUMINUM DOME TWEETER WITH POLYURETHANE SUSPENSION (COAXIAL)

- Damped chamber for optimum frequency response
- DDC (Discreet Dual clamp) component mounting provides concentric clamping pressure around the perimeter of the mounting hole
- Maximized ease of installation and fitment-Standard 1 3/4" hole saw

TREATED FABRIC DOME NEO-TWEETER WITH INTEGRAL SUSPENSION (T1 COMPONENT)

- Damped chamber for optimum frequency response
- DDC (Discreet Dual clamp) component mounting provides concentric clamping pressure around the perimeter of the mounting hole
- Maximized ease of installation and fitment-Standard 1 3/4" hole saw

Define the Edge.

POWER loudspeakers will transform your ride into a sonic experience so accurate and clear you might not want to get out of your car.

From our billet machined aluminum phase plug, to our audiophile grade component crossover, POWER loudspeakers' superior performance compliments the audiophile in all of us. Factor in patented VAST technology that increases cone area and you've got the ability to out perform others with so called same size speakers. Whether you're looking for a coaxial solution or a true component system, POWER series has a speaker for you.



NEW T2 COMPONENTS

BILLET MACHINED ALUMINUM PHASE PLUG

- Reduces distortion
- Improves thermal capacity

ALUMINUM DOME NEO-TWEETER WITH INTEGRAL SUSPENSION

- Tuned chamber for optimum frequency response
- DDC (Discreet Dual clamp) component mounting provides concentric clamping pressure around the perimeter of the mounting hole
- Maximized ease of installation and fitment-Standard 1 3/4" hole saw
- Patent Pending design



	Speaker Size	Tweeter Size	RMS Power Handling	Peak Power Handling	Frequency Response	Sensitivity (1w/1w)	Mounting Diameter	Mounting Depth
NEW T252-S	5.25"	1"	75 WATTS	150 WATTS	65Hz-22kHz	87dB	4.80"	2.03"
NEW T2652-S	6.5"	1"	100 WATTS	200 WATTS	55Hz-22kHz	89dB	5.59"	2.51"
NEW T2T-S	N/A	1"	75 WATTS	150 WATTS	3kHz-22kHz	90dB	1.75" *FLUSH MOUNT	0.95" *FLUSH MOUNT
T152-S	5.25"	1"	75 WATTS	150 WATTS	65Hz-20kHz	87dB	4.80"	2.03"
T1652-S	6.5"	1"	100 WATTS	200 WATTS	55Hz-22kHz	89dB	5.59"	2.51"
T1T-S	N/A	1"	75 WATTS	150 WATTS	3kHz-22kHz	90dB	1.75" *FLUSH MOUNT	0.95" *FLUSH MOUNT
T142	4	0.75"	40 WATTS	80 WATTS	90Hz-22kHz	86dB	4.06"	1.79"
T152	5.25"	1"	60 WATTS	120 WATTS	65Hz-22kHz	86.5dB	4.80"	2.03"
T1S652	6.5"	1"	70 WATTS	140 WATTS	65Hz-22kHz	88dB	5.04"	1.93"
T1652	6.5"	1"	75 WATTS	150 WATTS	55Hz-22kHz	89dB	5.59"	2.51"
T1462	4"x6"	0.75"	45 WATTS	90 WATTS	75Hz-24kHz	85.5dB	3.78" x 5.79"	2.00"
T1572	5"x7"	1"	70 WATTS	140 WATTS	60Hz-22kHz	87dB	4.80" x 7.13"	2.30"
T1682	6"x8"	1"	80 WATTS	160 WATTS	55Hz-22kHz	88dB	5.08" x 7.32"	2.60"
T1692	6"x9"	1"	100 WATTS	200 WATTS	50Hz-22kHz	90dB	5.78" x 8.58"	3.43"
T1693	6"x9"	1"	100 WATTS	200 WATTS	50Hz-22kHz	90dB	5.78" x 8.58"	3.43"

COMPONENTS | COAXIALS

VAST (VERTICAL ATTACH SURROUND ■ TECHNIQUE) **BUTYL RUBBER SURROUND ■**

- Significantly increases a speaker's effective radiating cone area (up to 25%) without complicated installation issues
- Improved nominal efficiency
- Maximized output capabilities
- Patent pending

FLEX FIT

- Slot mounted pattern allows for flexible installation

MULTI-OEM

- OEM adaptor plate designed to allow single skus for multiple vehicle applications
- Allows round component or coaxial to fit in certain 4x6" / 5x7" / 6x9" openings

ICC (INTEGRATED ■ CONCEALED ■ CROSSOVER)

- Decreases installation time on components
- Cleaner and easier installation

PEI ■ DOME TWEETER

- DDC (Discreet Dual Clamp) component mounting provides concentric clamping pressure around the perimeter of the mounting hole
- Maximized ease of installation and fitment (Standard 1 3/4" hole saw)



Shallow Depth
GREAT For
Shallow OEM
Applications

P1653



P1S652



Don't Compromise.

PUNCH loudspeakers are for those who like it raw and loud. Our patented VAST feature delivers more volume and deeper bass response while our PEI dome tweeter and injection molded cone keep the vocals ultra clear. Designed as a drop in replacement for your factory speakers, we make sure the installation is seamless. Our multi-OEM plate and flex fit basket ensure a proper fit into your ride. While our power handling lets you pull the power you're craving. Don't just listen to your music, feel it.



	Speaker Size	Tweeter Size	RMS Power Handling	Peak Power Handling	Frequency Response	Sensitivity (1w/1w)	Mounting Diameter	Mounting Depth
P152-S	5.25"	1"	50 WATTS	100 WATTS	70Hz-22kHz	87dB	4.81"	1.87"
P1652-S	6.5"	1"	60 WATTS	120 WATTS	60Hz-22kHz	89dB	5.57"	2.17"
P1T-S	N/A	1"	60 WATTS	120 WATTS	3.5kHz-22kHz	90dB	1.75" *FLUSH MOUNT	0.91" *FLUSH MOUNT
P132	3.5"	0.5"	20 WATTS	40 WATTS	120Hz-22kHz	85dB	3.21"	1.38"
P142	4"	0.75"	30 WATTS	60 WATTS	100Hz-22kHz	86.5dB	4.04"	1.69"
P152	5.25"	0.75"	40 WATTS	80 WATTS	70Hz-22kHz	87dB	4.81"	1.87"
P1S652	6.5"	0.75"	55 WATTS	110 WATTS	65Hz-22kHz	88dB	5.05"	1.89"
P1653	6.5"	0.75"	60 WATTS	120 WATTS	60Hz-24kHz	89dB	5.57"	2.17"
P1462	4"x6"	0.75"	35 WATTS	70 WATTS	90Hz-22kHz	87.5dB	3.63" x 5.80"	1.81"
P1572	5"x7"	0.75"	60 WATTS	120 WATTS	75Hz-22kHz	89dB	4.58" x 6.71"	2.20"
P1683	6"x8"	0.75"	65 WATTS	130 WATTS	65Hz-24kHz	90dB	4.88" x 6.92"	2.28"
P1692	6"x9"	0.75"	75 WATTS	150 WATTS	60Hz-22kHz	91dB	5.62" x 8.28"	3.07"
P1694	6"x9"	0.75"	75 WATTS	150 WATTS	60Hz-24kHz	91dB	5.62" x 8.28"	3.07"

MICA INJECTED POLYPROPYLENE CONE

- Adds strength and rigidity
- Provides resiliency against high power output
- Full bodied sound

18 AWG STAMPED STEEL FRAME

- Textured abrasion resistant powder coated finish
- Direct OEM mounting applications
- Shallow mounting depth

½" / 13MM MYLAR BALANCED DOME TWEETER

- Lightweight mylar combines high sensitivity and smooth extended frequency response
- Ensures low distortion
- Provides an open sound stage
- Multiple mounting configurations- flush-surface-angle

R152



R1693



Stock is for Sissies.

Sick of that factory paper cone speaker vibrating your door panel loose? We thought so; we've designed PRIME loudspeakers to be a no-compromise factory replacement speaker that delivers authentic Rockford sound at a PRIME price point. The ultra lightweight poly cone and dome tweeter make the PRIME drivers efficient enough to hook up directly to your factory head-unit. If you want to kick it up, add a PRIME four channel R300-4 amplifier.

With our line of coaxial speakers and our newly added component sets (R162-S, R152-S) PRIME loudspeakers are a perfect fit for any vehicle.



R1652-S



		Speaker Size	Tweeter Size	RMS Power Handling	Peak Power Handling	Frequency Response	Sensitivity (1w/1w)	Mounting Diameter	Mounting Depth
NEW	R152-S	5.25"	1"	40 WATTS	80 WATTS	58Hz-20kHz	85dB	4.76"	1.91"
NEW	R1652-S	6.5"	1"	40 WATTS	80 WATTS	55Hz-20kHz	89dB	5.71"	2.17"
NEW	R1T-S	N/A	0.50"	40 WATTS	80 WATTS	2.5KHz-22kHz	88dB	1.83" *FLUSH MOUNT	0.76" *FLUSH MOUNT
	R152	5.25"	0.50"	35 WATTS	70 WATTS	53Hz-22kHz	87dB	4.78"	1.91"
	R1653	6.5"	0.50"/0.75"	40 WATTS	80 WATTS	48Hz-22kHz	89dB	5.61"	2.00"
NEW	R1682	6"x8"	0.50"	50 WATTS	100 WATTS	57Hz-20kHz	88dB	5.08" x 7.32"	2.54"
	R1693	6"x9"	0.50"/0.75"	60 WATTS	120 WATTS	48Hz-22kHz	90dB	6.02" x 6.74"	2.65"

OWN the Lake.

So you've convinced the better half that the lake chariot needs an upgrade, you've told her that she needs to hear the detail in the music while she's behind the tournament inboard. Yeah right! When's the last time she's even been on the boat? The M2 oversized 8" full range speakers mount perfectly on a wide range of towers to keep you smiling on the short line.

Ready to idle your party barge into the cove and serve notice that you've arrived? M2 subs prove that it doesn't take haulin' on the open lake to create the biggest wake! With both 10" & 12" sizes available, now you just need to find the right track to kick it up a notch and those bikini tops will start flying.

However you choose to spend your day on the water, you'll own it with M2 Marine Grade.

SUBWOOFERS | COAXIALS

MARINE GRADE APPROVED

- 100% UV stable CENTREX® injection molded plastic
- Corrosion resistant gold plated polarized terminals
- Injection molded polypropylene cone with UV inhibitors
- Internal full magnetic shielding (subwoofers only)
- Stainless steel grilles and mounting hardware

VAST (VERTICAL ATTACH SURROUND) TECHNIQUE

THERMO-PLASTIC ELASTOMER SURROUND

- UV and salt-fog resistant
- Significantly increases a speaker's effective radiating cone area (up to 25%) without complicated installation issues
- Improved nominal efficiency
- Maximized output capabilities
- Patent pending

FLEX FIT

- Slot mounted pattern allows for flexible installation

ICC (INTEGRATED CONCEALED CROSSOVER) COAXIALS

- Reduces installation time
- Cleaner and easier installation

1" ALUMINUM DOME TWEETER

- Bridge mounted component tweeter
- Eliminates the need for external tweeter mounting surfaces and reduces installation time
- Integrated 12 dB/octave crossover with protection circuit

REMOVABLE TRIM RINGS

- Available in black or white



M262 | M262B



M282 | M282B



**GREAT For
Wake Tower
Applications**





M212S4 | M212S4B

M212S4 | M212S4B



	Speaker Size	Tweeter Size	RMS Power Handling	Peak Power Handling	Frequency Response	Sensitivity (1w/1w)	Mounting Diameter	Mounting Depth
M262 M262B	6.5"	1"	75 WATTS	150 WATTS	53Hz-22kHz	88dB	5.15"	2.80"
M282 M282B	8"	1"	100 WATTS	200 WATTS	48Hz-22kHz	90dB	7.09"	3.42"

	Speaker Size	RMS Power Handling	Peak Power Handling	Nominal Impedance	Sealed Enclosure	Ported Enclosure	Sensitivity	Mounting Diameter	Mounting Depth
M210S4 M210S4B	10"	250 WATTS	500 WATTS	SINGLE 4 Ω	0.75 CU. FT.	1.25 CU. FT.* (1) 4"X8.5" PORT	86dB	9.00"	5.54"
M212S4 M212S4B	12"	300 WATTS	600 WATTS	SINGLE 4 Ω	1.00 CU. FT.	1.50 CU. FT.* (1) 3"X5.74" PORT	87dB	10.95"	6.58"

*Infinite baffle compatible

ACCESSORIES

FULL SPECIFICATION

Don't Skimp Now.

OK, you've spent months researching the perfect amp, sub and full range speakers for your dream system. You picked up some OT at work and saved every penny to make sure your ride will bring the doom. Now it's go time player and you're going to connect this stuff with a bunch of strands? This will take you from hero to zero quicker than the speed of sound.

Don't let your new gear down, Rockford Fosgate accessories are designed to extract maximum performance and reliability all the time, every time.

ENGINEERED TO ROCK

- Industry leading warranty program
- Adds 1 year of extended warranty with qualifying amp kit purchase



AMPLIFIER INSTALLATION KITS

- Power only
- Power with interconnects
- Complete kits available

FULL SPECIFICATION WIRE

- 100% Oxygen free copper
- AWG (American Wire Gauge) standard... Every strand, every time
- Ensures 100% potential of the amplifiers and speakers
- Power in = Power out

FULL SPECIFICATION BRASS

- All distribution, fused distribution, and battery terminals are manufactured using the highest quality standards of brass available
- No "pot metal" allowed

HIGH PERFORMANCE CAPACITORS

- Low ESR (Equivalent Series Resistance)
- 16volt-20volt peak
- Solid brass connectivity
- Improves sound quality with louder, harder hitting bass
- Extends battery life
- Carbon-electrolytic hybrid capacitors available

DEADSKIN

- Premium sound deadening material
- Foil backing
- Butyl rubber high temp construction
- Available in 20 sq. ft. kit
- More bass from the same space





PEQX3



RCAs



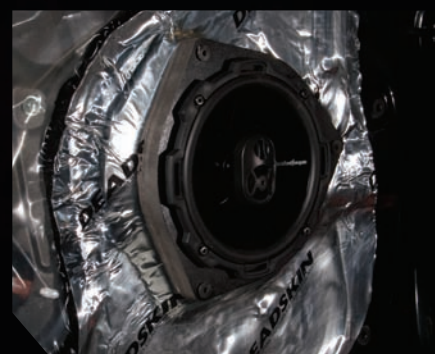
Badge Kit



Circuit Breaker



Capacitor Distribution



Deadskin

ROCKFORD FOSGATE

WWW.ROCKFORDFOSGATE.COM



Don't forget to use our AMP WIRING & WOOFER WIRING WIZARDS to get the right specs for your installation.

PUNCHWEAR₁₀



Please VISIT ROCKFORDFOSGATE.COM
FOR MORE PRODUCTS AND DETAILS



POPF-NECKWRAP

FRONT

POPF-GRF



BACK

POPF-FOIL



POPF-TAGGED



POPF-POLO



BACK

POPF-RAGE



BACK

POPF-GRUNGE



BACK

POPF-BLKHAT

POPF-TRUCKER

Pictured left:
POPF-HOODY and POPF-GIRLYT